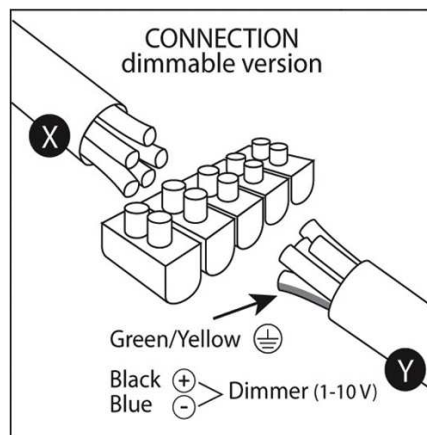
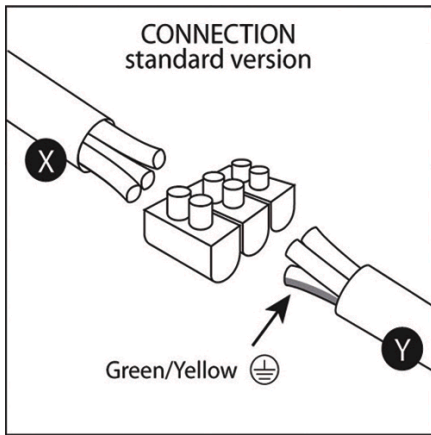


## SPACEWALKER FLOOR

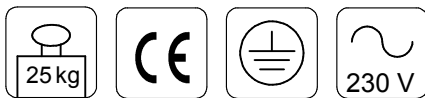
- Step 1 : Place on each foot one rubber
- Step 2 : Place slotted set screw into the footplate
- Step 3 : Insert lampholder with lamps into the body and fix with 3 x screw M6x20
- Step 4 : Place body cover on the body
- Step 5 : Place footplate on de body ( feet )
- Step 6 : Fix the footplate on de body ( feet ) with special screws
- Step 7 : Place fluo pink cable into backpack body and on the slotted set screw on footplate

### ATTENTION !!

DO NOT PLACE THE SPACEWALKER BODY ON HIS HEAD !!



3x21W / G5  
T5 3x39W / G5

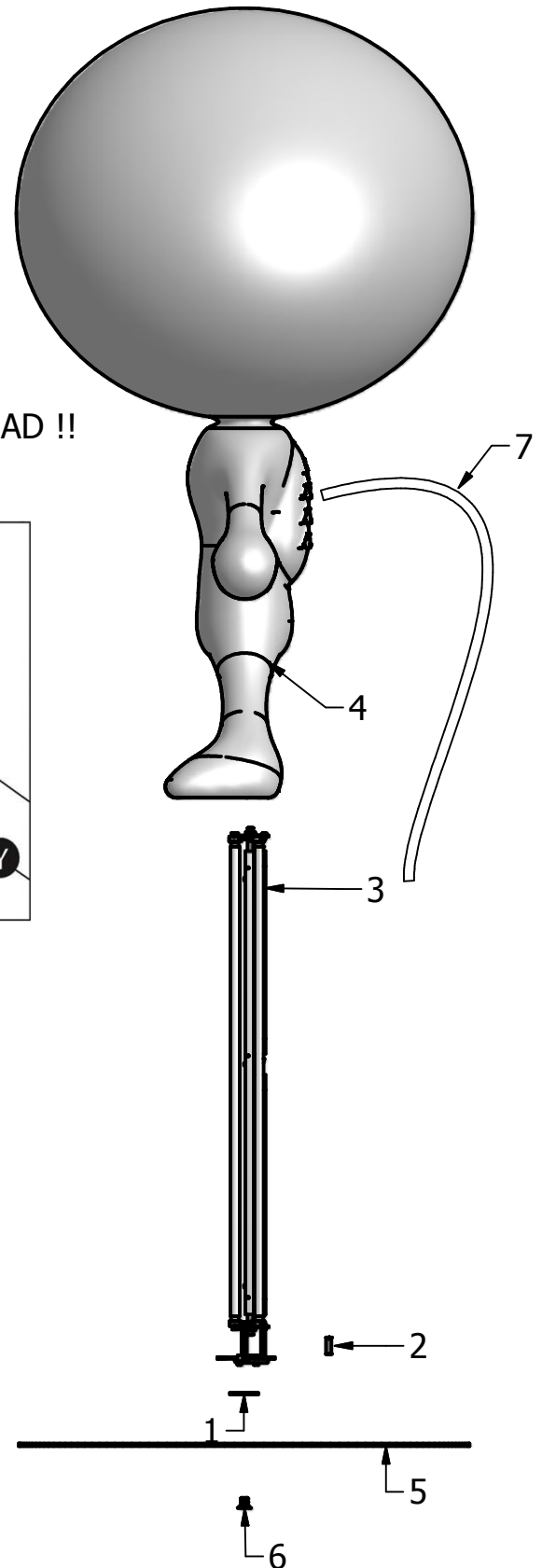


EVG EVGD DALI

**DARK®** <<<

www.dark.be

Dark nv  
Vliegplein 43, B-9991 Maldegem  
tel +32(0)50/71.81.40  
fax +32(0)50/71.04.66  
e-mail info@dark.be



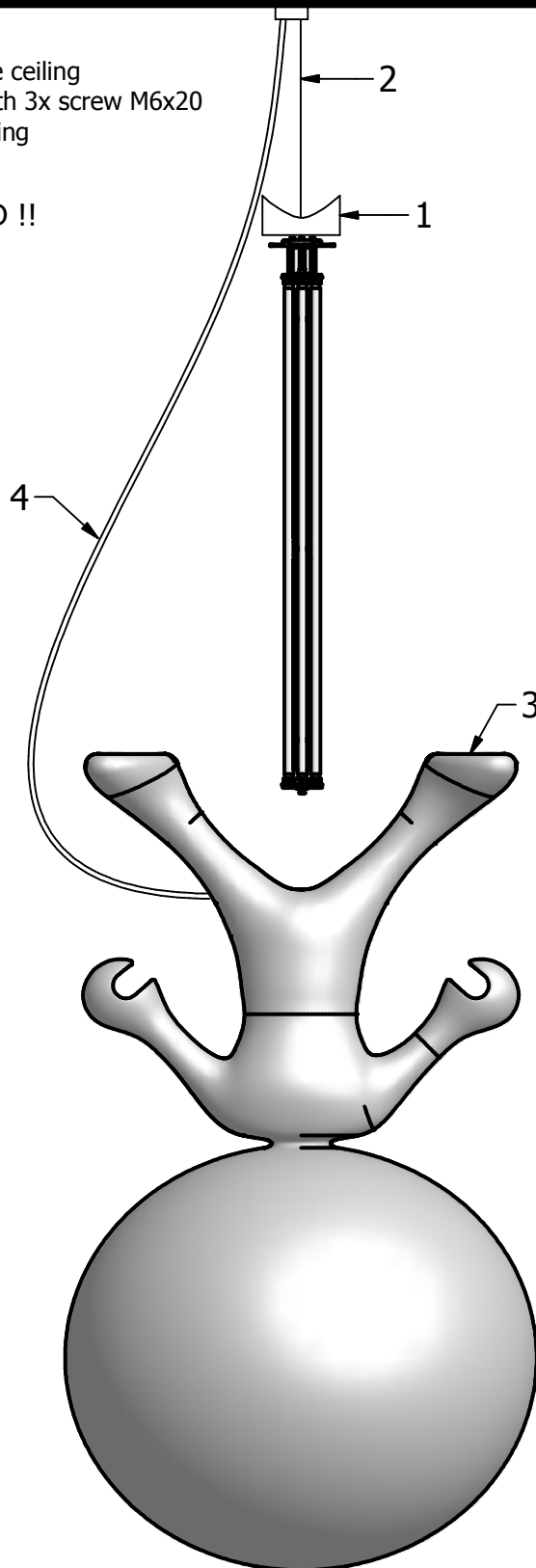
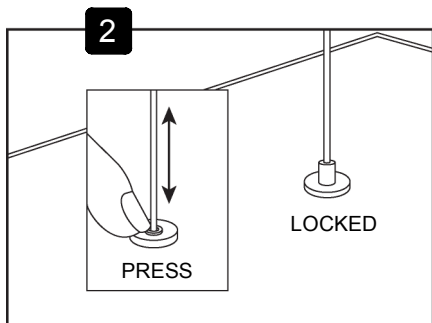
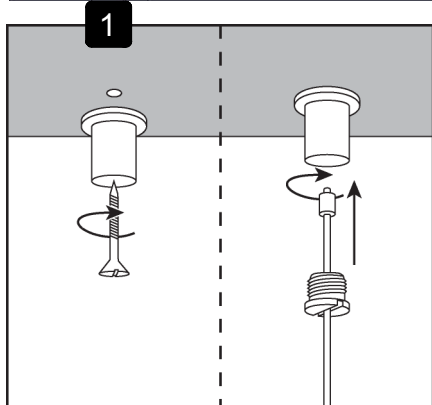
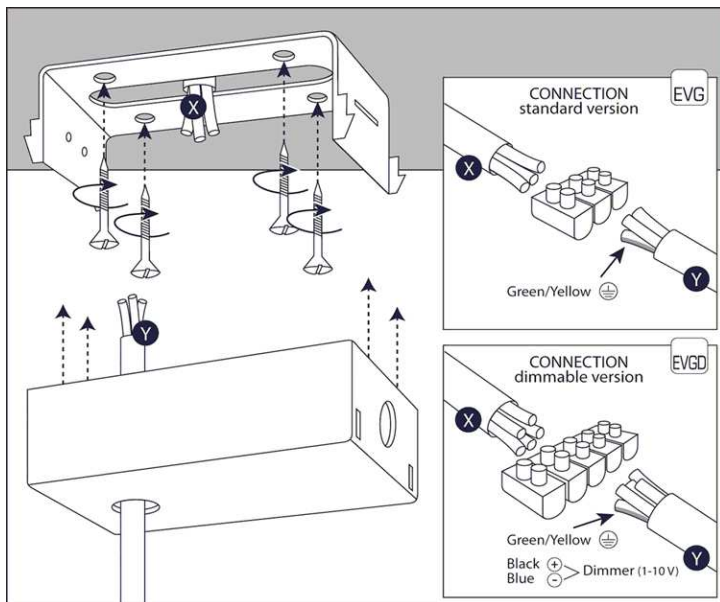
# ASSEMBLY DOCTOR

Design by CONSTANTIN WORTMANN

- Step 1 : Place body cover over the steel cable and electric wire
- Step 2 : Place steel cable with lampholder and suspension kit on the ceiling
- Step 3 : Place the spacewalker body over the lampholder and fix with 3x screw M6x20
- Step 4 : Place fluo pink cable into backpack body and fix on the ceiling

**ATTENTION !!**

**DO NOT PLACE THE SPACEWALKER BODY ON HIS HEAD !!**



www.dark.be



3x21W / G5  
3x39W / G5



Dark nv  
Vliegplein 43, B-9991 Maldegem  
tel +32(0)50/71.81.40  
fax +32(0)50/71.04.66  
e-mail info@dark.be