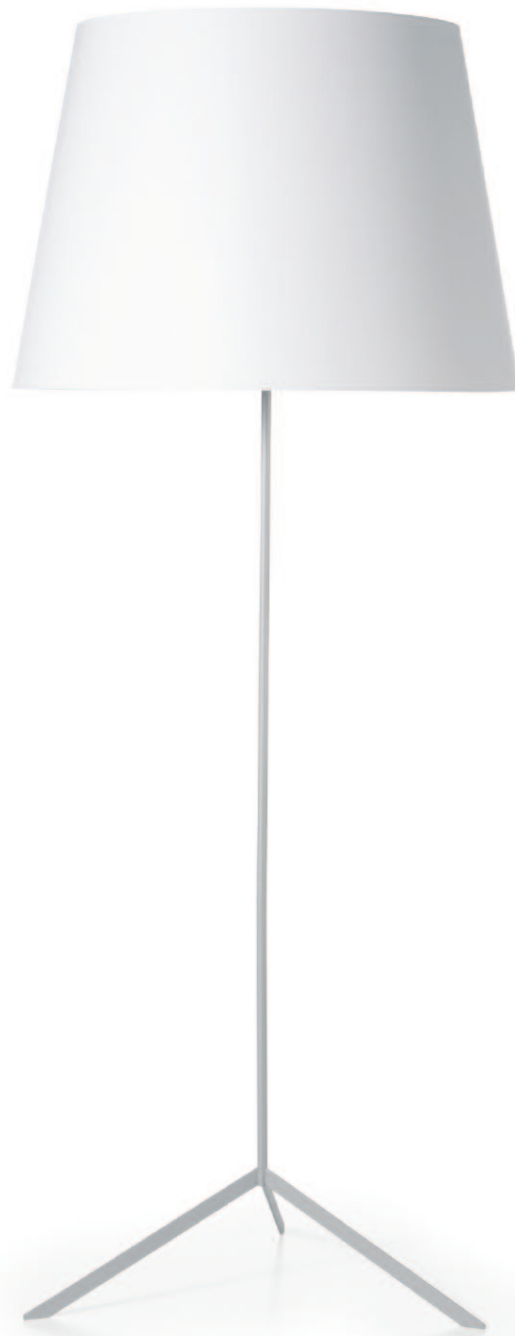


m o o o i<sup>®</sup>



## Double Shade

---

A classic item from the Moooi lighting collection both versatile and charismatic in form and function.

---

<b>Designer</b>	Marcel Wanders
<b>Year of design</b>	1998
<b>Material</b>	PVC/viscose laminate shade on a powdercoated steel frame
<b>Additional</b>	The Double Shade comes in 1 box and requires assembling of the base.

---

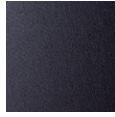
# m o o i

---

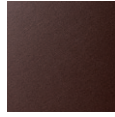
## Colour



White



Black



Graphite

The colour choice is applied to the outside of the shade, the inside is always grey PVC.  
Base always in grey structured powdercoat, comes with seperate transparant covers.

---

## Technical



E27 x I

60 W MAX type A



Cable length 2,5M (black)

Europlug



E26 x I

60 W MAX type A

Cable length 2,5M (black)

US 2-pin plug

---

## Packaging

H 60cm | 23.6"

W 62cm | 24.4

L 63cm | 24.8

I Colli

Product weight:

2,1 KG | 4,6 lb

With packaging:

5,1 KG | 11,2 lb

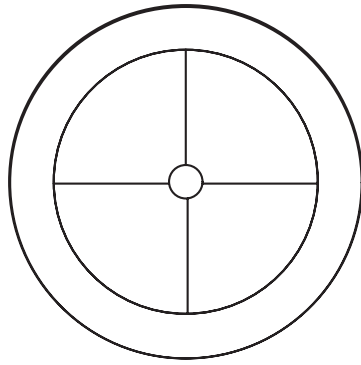
---

## Cleaning Instructions

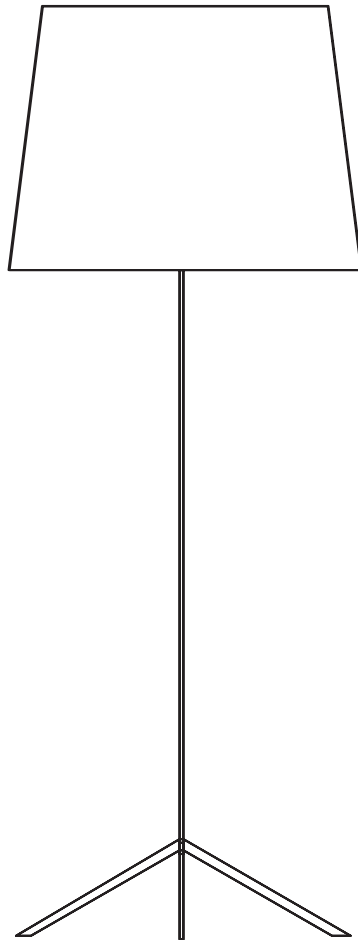
The Double shade should be cleaned regularly with a dry cloth or feather duster to prevent a build up of dust. For more stubborn stains use a familiar stain remover that does not contain bleach. The metal frame structure can be cleaned with most trusted multi-surface cleaner and a non-abrasive sponge or cloth. Please ensure the lamp is not connected to the mains whilst cleaning.

# m o o o i<sup>®</sup>

## Main dimensions



60cm | 23.6"



160cm | 63"